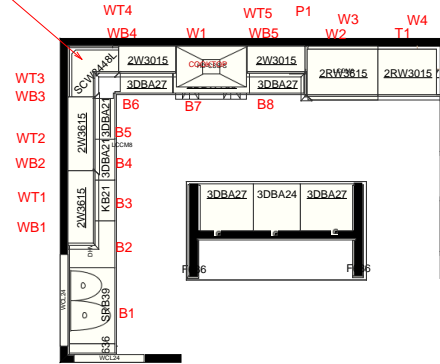


Note: Bottom Corner will be what is known as dead space, "NO CABINETS"



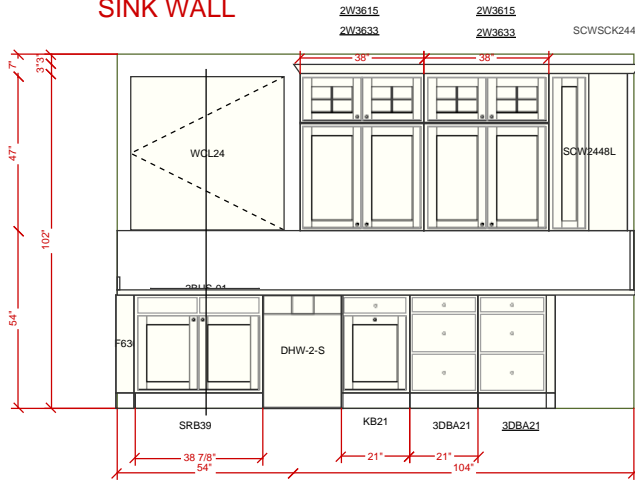
- WB1= Wall Cabinet 38" Wide, 33" Tall and 14" Deep, Stacked below WT1, Flush Left.
- WB2= Wall Cabinet 38" Wide, 33" Tall and 14" Deep, Stacked below WT2.
- WB3= Wall Cabinet 29 1/4" Wide, 33" Tall and 14" Deep, Stacked Below WT4, Flush Right.
- WB5= Wall Cabinet 29 1/4" Wide, 33" Tall and 14" Deep, Stacked Below WT5, Flushed Left.
- WT1= Wall Cabinet with glass doors 29 1/4" Wide, 15" Tall and 14" Deep, Stacked Above WB1, Flush Left.
- WT2= Wall Cabinet with glass doors 38" Wide, 15" Tall and 14" Deep, Stacked Above WB2.
- WT4= Wall Cabinet with glass doors 29 1/4" Wide, 15" Tall and 14" Deep, Stacked Above WB4, Flushed Right.
- WT5= Wall Cabinet with glass doors 29 1/4" Wide, 15" Tall and 14" Deep, Stacked Above WB5, Flushed Left.
- P1= Tall Finish panel 1 1/2" wide 102" tall and 26" deep "Flush left"
- W2= Wall Cabinet, 36" Wide and 15" Tall and 24" Deep.
- W3= Wall Cabinet, 36" Wide and 15" Tall and 24" Deep.
- W4= Wall Cabinet, 36" Wide and 15" Tall and 24" Deep.
- T1= 2QC3M3087, Oven microwave cabinets 30" wide 81" tall and 26" deep (Extended stile on right to allow for door jamb clearance)
- B1= SRB39 Sink base 42" wide, 2x3x3/8 drawer heads and 2x Doors.
- B2= Dishwasher.
- B3= 21" Wide, 3 Drawers top drawer opening 5 11/16", 2nd drawer 9" opening, 3rd drawer 9 13/16" opening.
- B4= 21" Wide, 3 Drawers top drawer opening 5 11/16", 2nd drawer 9" opening, 3rd drawer 9 13/16" opening.
- B5= 21" Wide, 3 Drawers top drawer opening 5 11/16", 2nd drawer 9" opening, 3rd drawer 9 13/16" opening.
- B6= 27" Wide, 3 Drawers top drawer opening 5 11/16", 2nd drawer 9" opening, 3rd drawer 9 13/16" opening.
- B7= 39" Wide, 2 Top in blank for Rangenop, 2nd drawer 9 1/8" opening, 3rd drawer 9 1/8" opening.
- B8= 29 1/4", 3 Drawers top drawer opening 5 11/16", 2nd drawer 9" opening, 3rd drawer 9 13/16" opening.
- B9= 27" Wide, 3 Drawers top drawer opening 5 11/16", 2nd drawer 9" opening, 3rd drawer 9 13/16" opening.
- B10= 24" Wide, 3 Drawers top drawer opening 5 11/16", 2nd drawer 9" opening, 3rd drawer 9 13/16" opening.
- B11= 27" Wide, 3 Drawers top drawer opening 5 11/16", 2nd drawer 9" opening, 3rd drawer 9 13/16" opening.

Customer: Schroeder
 Cabinets: Slammik "Inat"
 Door Style: Fairhaven 2 1/2" stiles and rails.
 Wood: Maple
 Finish: White
 Hinges: Concealed
 Glass: Clear
 Top drawer head: Slab
 Larger drawer heads: 5-Piece
 Door Frame: Square
 Drawer Frame: Square
 Note: all exposed end cabinets will have Flush Ends.
 Note: All cabinets above countertop will have white interiors.

B9 B10 B11

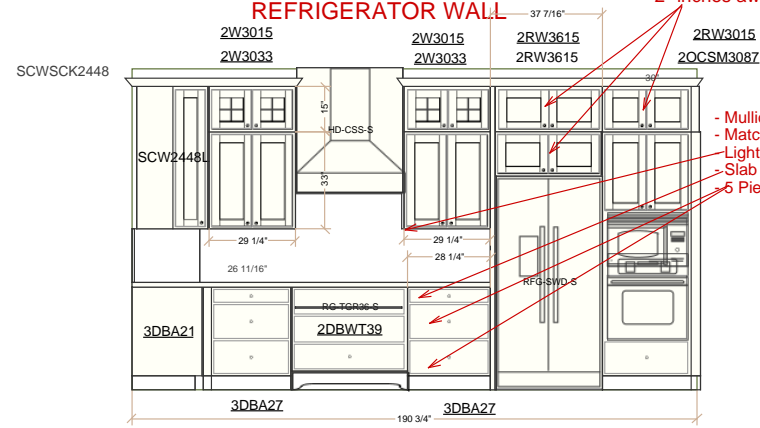
Note: Pony wall will be built from stand dimension lumber and wrapped with 1/4" Plywood.

SINK WALL



- Glass door "Clear Glass".
- Matching interior.
- Light Rail molding.
- Slab Drawer Head "TOP DRAWERS".
- 5 Piece Drawer head.

REFRIGERATOR WALL



Note: These cabinets will be pulled forward 2" inches away from wall.

- Mullion Glass Doors.
- Matching interior.
- Light Rail Molding.
- Slab Drawer Head on all upper drawers.
- 5 Piece heads on all lower drawers.

These designs are the property of
 The Kitchen & Bath Showroom LLC
 [DBA= The Showroom]



"The People To Know The Place To

Designed: 04.02.1
 Printed: 04.02.15